



Retail Space for Lease

365 Greenwich Avenue  
Greenwich, Connecticut



Property Highlights

- Exceptional retail opportunity on one of the nation's best high streets
- Beautiful interior finishes including hardwood floors and generous ceiling heights
- Walking distance Greenwich Train Station
- Strong demographic profile

Available Space

- 1,650 SF – Ground Floor
- Possession – 12/1/2016
- Term – Negotiable
- Rent – \$100/SF NNN

Exclusive Leasing Agents:

**Jessica Curtis**  
203.531.3626  
jessica.curtis@ngkf.com

**Jennifer Terra**  
203.705.3294  
jennifer.terra@ngkf.com

**Robert Marona**  
203.531.3631  
robert.marona@ngkf.com

DEMOGRAPHICS:	1 MILE	3 MILES	5 MILES
Total Population:	11,173	70,926	151,201
Daytime Population:	22,041	47,596	136,802
Average HH Income:	\$162,070	\$156,236	\$154,978

680 Washington Boulevard, 8<sup>th</sup> Floor  
Stamford, CT 06901

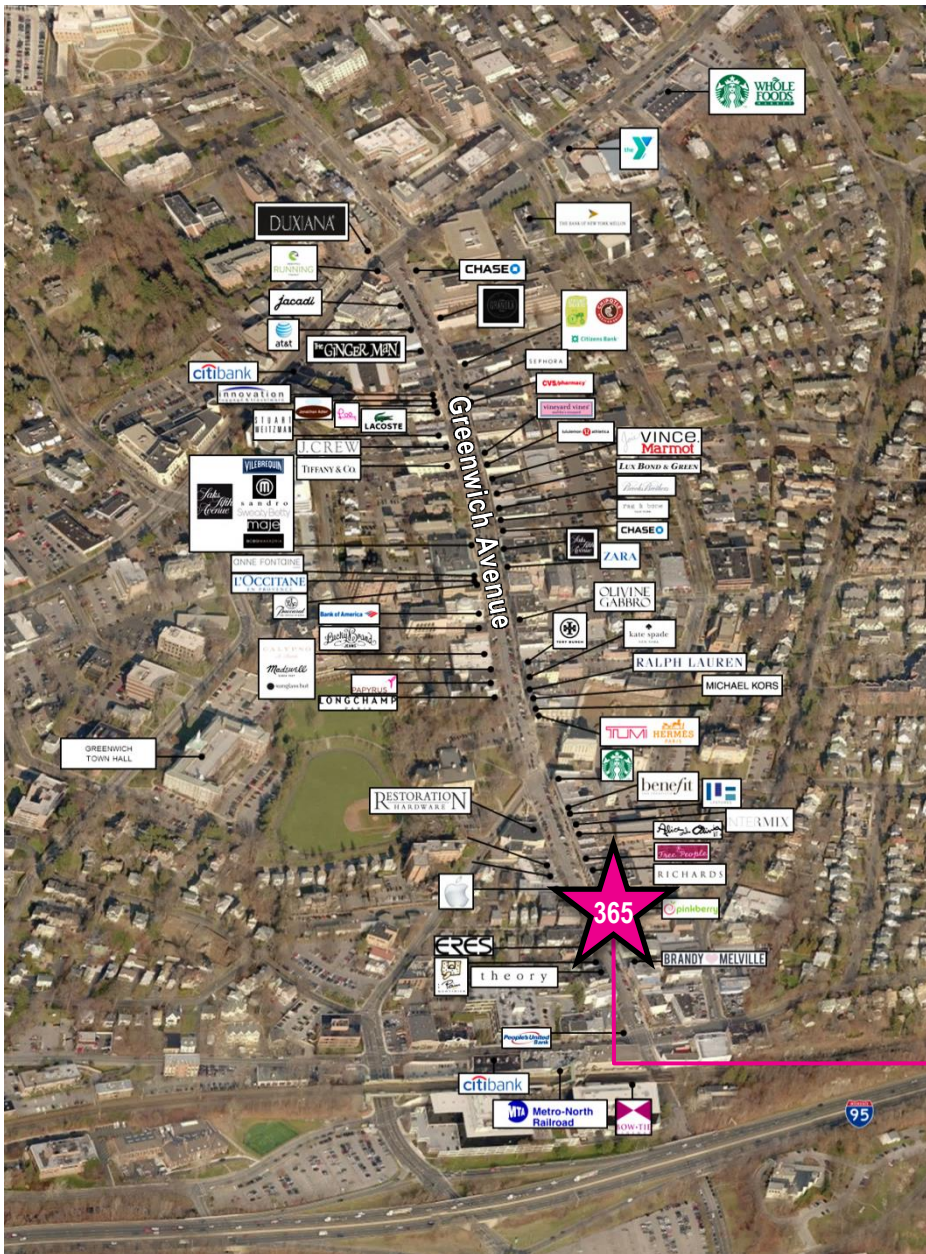
[www.ngkf.com/retail](http://www.ngkf.com/retail)

Procuring broker shall only be entitled to a commission, calculated in accordance with the rates approved by our principal only if such procuring broker executes a brokerage agreement acceptable to us and our principal and the conditions as set forth in the brokerage agreement are fully and unconditionally satisfied. Although all information furnished regarding property for sale, rental, or financing is from sources deemed reliable, such information has not been verified and no express representation is made nor is any to be implied as to the accuracy thereof and it is submitted subject to errors, omissions, change of price, rental or other conditions, prior sale, lease or financing, or withdrawal without notice and to any special conditions imposed by our principal.



# 365 Greenwich Avenue

Greenwich, Connecticut



**Greenwich, Connecticut** is consistently ranked as one of the wealthiest zip codes in the United States by CNBC/Yahoo Finance and is often featured on CNN/Money and Money Magazines “Top Earning Towns” and “Best Places to Live” lists. A Greenwich address, either residential or commercial evokes images of luxury and sophistication. Formerly acknowledged as a bedroom community of Manhattan, many top corporations have expanded out of New York City and into Fairfield County. Along with being home to wealthy executives, Greenwich is also home to hundreds of hedge funds, private equity firms and other financial services.

**Greenwich Avenue** is the premier retail location for this sophisticated and affluent clientele. This diverse shopping destination boasts an impressive roster of national and international retailers and has earned the distinction of being called the “Rodeo Drive of the East.”



## Exclusive Leasing Agents:

**Jessica Curtis**  
203.531.3626  
jessica.curtis@ngkf.com

**Jennifer Terra**  
203.705.3294  
jennifer.terra@ngkf.com

**Robert Marona**  
203.531.3631  
robert.marona@ngkf.com

680 Washington Boulevard, 8<sup>th</sup> Floor  
Stamford, CT 06901

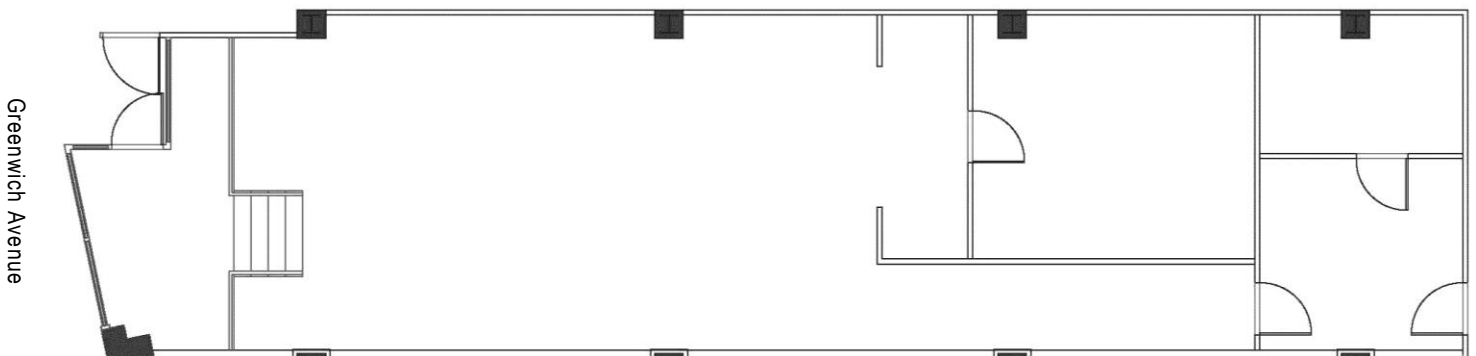
[www.ngkf.com/retail](http://www.ngkf.com/retail)



# 365 Greenwich Avenue

Greenwich, Connecticut

1,650 SF - Ground Floor



## Exclusive Leasing Agents:

**Jessica Curtis**

203.531.3626

[jessica.curtis@ngkf.com](mailto:jessica.curtis@ngkf.com)

**Jennifer Terra**

203.705.3294

[jennifer.terra@ngkf.com](mailto:jennifer.terra@ngkf.com)

**Robert Marona**

203.531.3631

[robert.marona@ngkf.com](mailto:robert.marona@ngkf.com)