

150 BOSTON POST ROAD

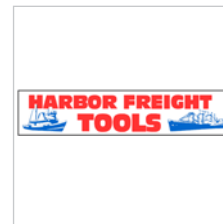
Orange, Connecticut



Property Features:

- › Great visibility and frontage on the Boston Post Road (Route 1) with traffic counts of approximately 50,000 cars per day
- › Endcap available and divisible to two units of 8,500± sf each
- › Abundant parking
- › Area retailers include: Stop & Shop, Home Depot, Best Buy, Kohl's and several other national retailers

New Tenant:



Area Demographic:

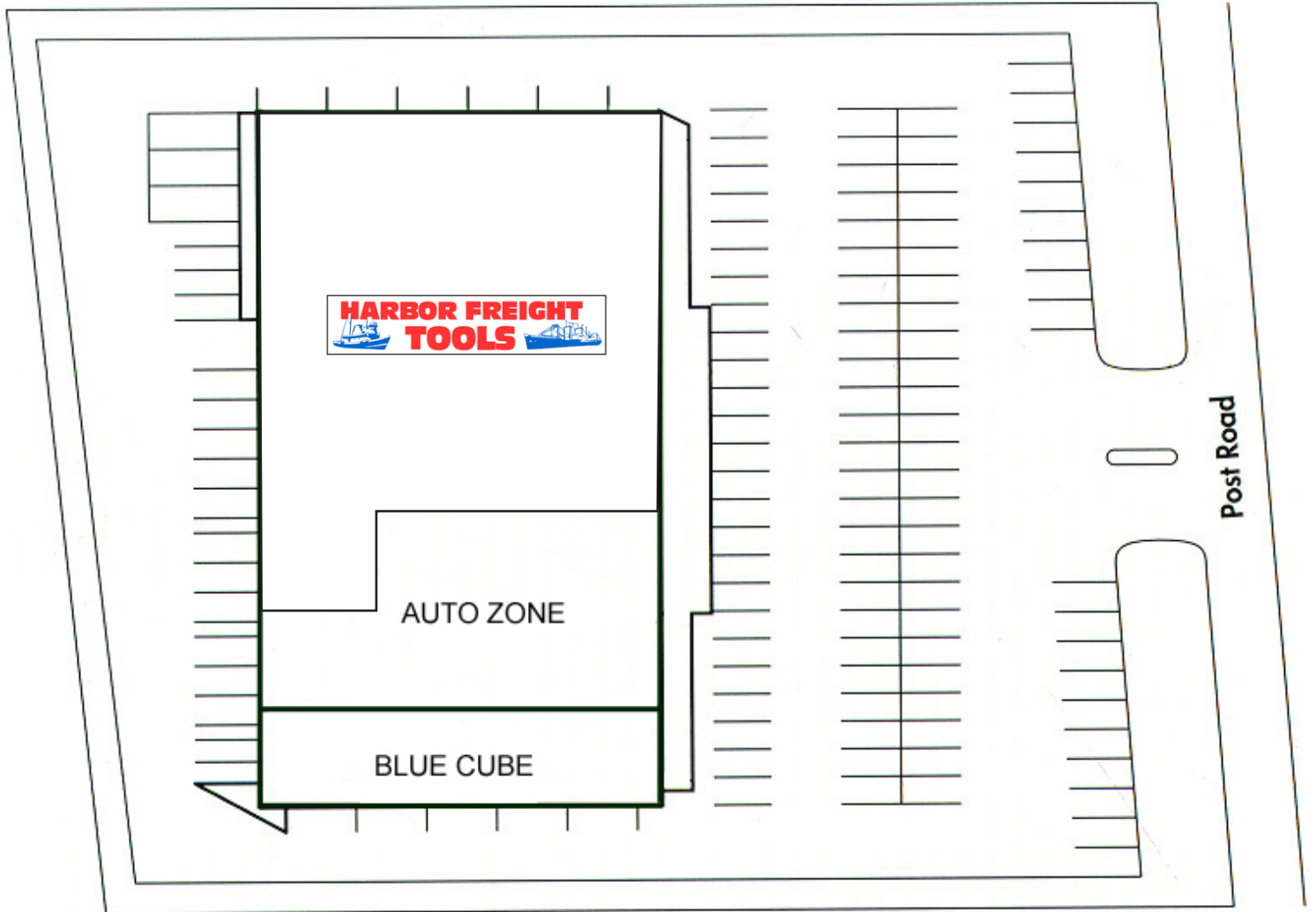
Radius	Population	Avg HH Income
1 mile	5,851	\$79,350
3 miles	69,075	\$72,484
5 miles	183,466	\$71,264


For More Information:

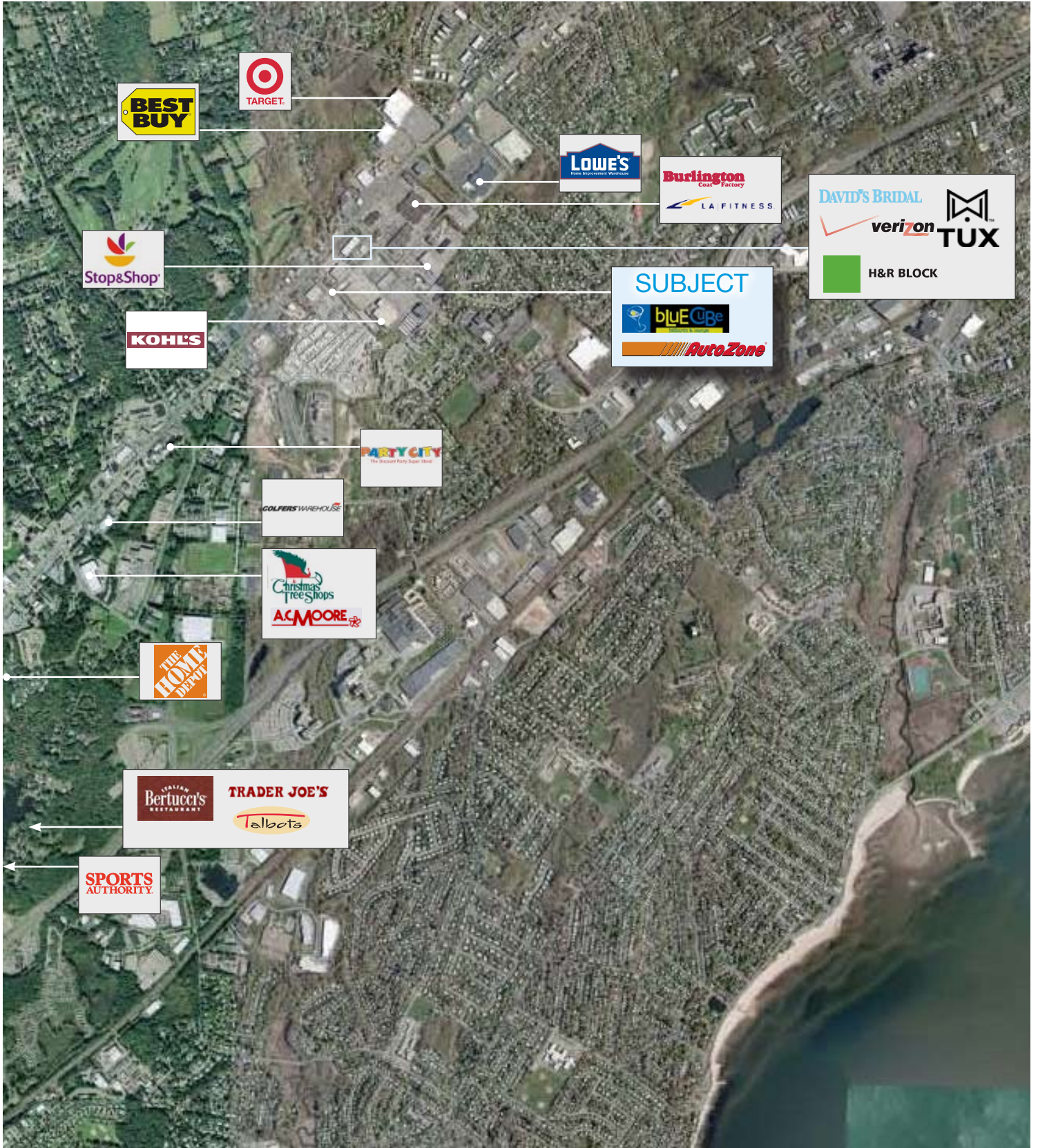
Jason Wuchiski, Senior Vice President | T: 203.653.1737 | jwuchiski@rhysre.com
Michael Weiner, Senior Associate | T: 203.653.1738 | mweiner@rhysre.com

RHYS intends that the information contained in this document is accurate. Information contained in this document has been reviewed and approved by RHYS; However, errors sometimes occur. Therefore, RHYS disclaims any warranty of any kind, expressed or implied, as to any matter whatsoever relating to this service. In no event shall RHYS be liable for any indirect, special, incidental or consequential damages arising out of any use of or reliance on any content or materials contained herein.

RHYS



 = Available



RHYS intends that the information contained in this document is accurate. Information contained in this document has been reviewed and approved by RHYS; However, errors sometimes occur. Therefore, RHYS disclaims any warranty of any kind, expressed or implied, as to any matter whatsoever relating to this service. In no event shall RHYS be liable for any indirect, special, incidental or consequential damages arising out of any use of or reliance on any content or materials contained herein.

	1 mile	3 miles	5 miles
Population: 2009			
Total Population	5,851	69,075	183,466
Male Population	48.2%	48.3%	48.6%
Female Population	51.9%	51.8%	51.4%
Median Age	39.8	39.9	35.6
Population Density (per sq. mi.)	1,862.4	2,443.0	2,336.0
Employees	7,557	38,421	133,169
Establishments	443	3,188	9,681
Income: 2009			
Median HH Income	\$59,544	\$58,391	\$53,054
Per Capita Income	\$31,319	\$29,248	\$28,621
Average HH Income	\$79,350	\$72,484	\$71,264
Households: 2009			
Total Households	2,279	26,936	68,656
Average Household Size	2.55	2.51	2.47
Household Growth 1990 - 2000	-17.8%	0.4%	0.3%
Housing: 2009			
Owner Occupied Housing Units	58.0%	62.7%	53.9%
Renter Occupied Housing Units	34.1%	29.9%	36.4%
Vacant Housing Units	8.0%	7.4%	9.7%
Race: 2009			
White	60.4%	75.3%	63.9%
Black	22.0%	13.6%	22.2%
American Indian, Eskimo, Aleut	0.2%	0.2%	0.3%
Asian	9.3%	4.4%	4.8%
Hawaiian or Pacific Islander	0.2%	0.1%	0.1%
Other	4.4%	3.5%	5.5%
Multirace	3.6%	2.9%	3.2%
Ethnicity: 2009			
Hispanic	13.5%	11.1%	14.9%
Non-Hispanic	86.5%	88.9%	85.1%